



# Continuous Improvement Team

November 6, 2012

Thelma Meléndez de Santa Ana, Ph.D.  
Superintendent, Santa Ana Unified School District

Getting to the Core



**Superior Standards**

**Supportive School Climate**

**Successful Students**



## ***Our Success, Our Passion***

*In August 2012, the Santa Ana Unified School District Board of Education approved our new Vision and Mission Statements as part of the Seven Building Blocks to SAUSD's success. These statements align with the national direction and our implementation of the Common Core State Standards. They reflect SAUSD's path to providing a world-class education to ensure that our students are college and career ready and prepared to assume their role as a part of the global citizenry.*

**S**uccess

**A**chievement

**U**nited

**S**ervice

**D**edication

### **Vision Statement**

**We will work collaboratively and comprehensively with staff, parents, and the community to strengthen a learning environment focused on raising the achievement of all students and preparing them for success in college and career.**

### **Mission Statement**

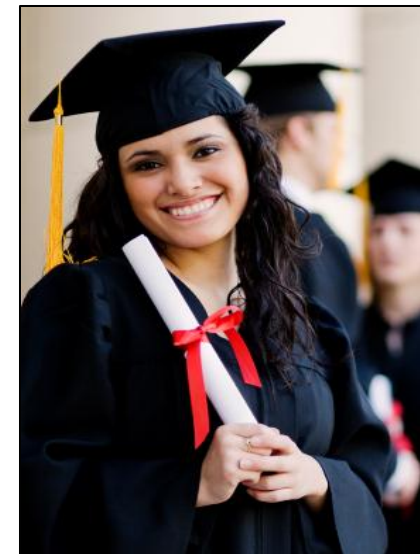
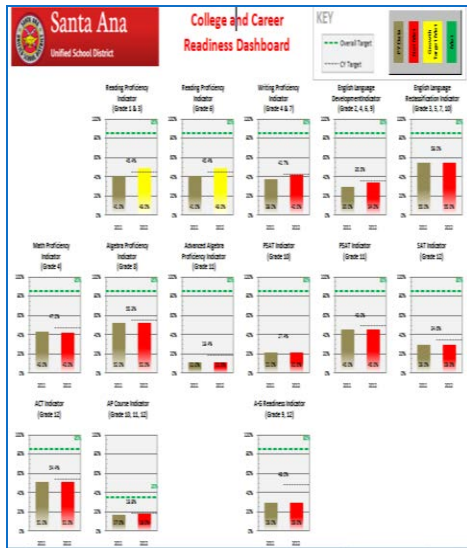
**We assure well-rounded learning experiences, which prepare our students for success in college and career. We engage, inspire, and challenge all of our students to become productive citizens, ethical leaders, and positive contributors to our community, country and a global society.**

**Santa Ana Unified School District**

# Welcome to the 2012-2013 School Year!



## Getting to the Core!



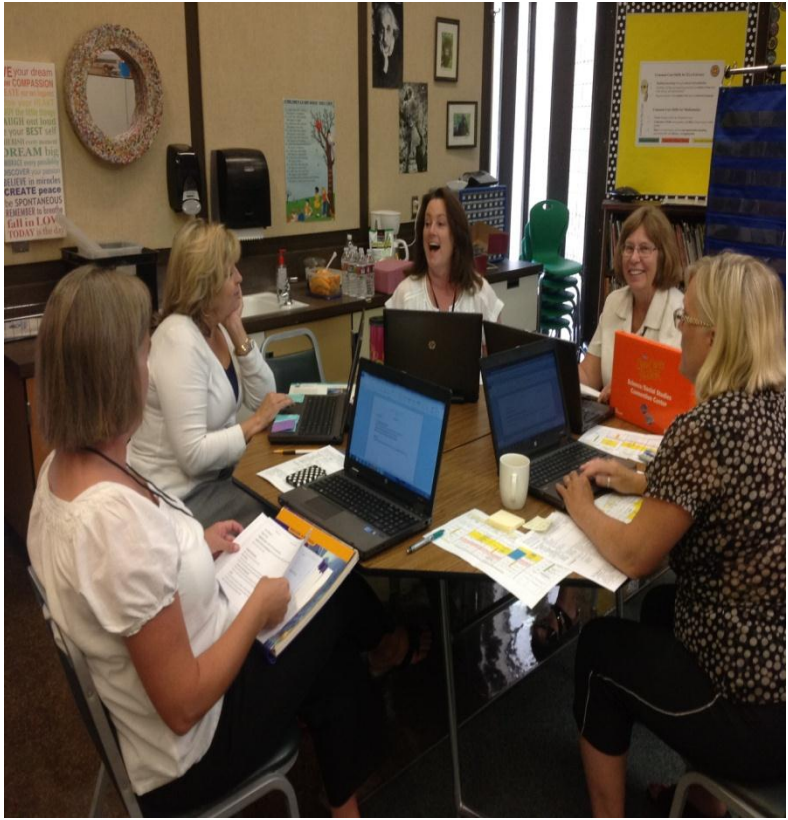
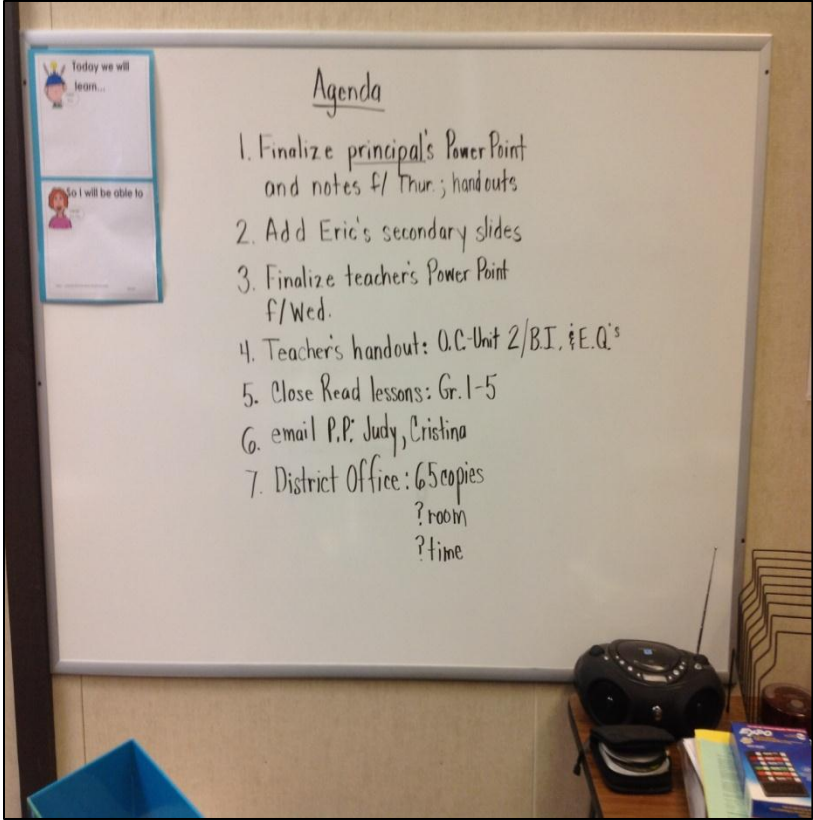
**Superior Standards**

**Supportive School Climate**

**Successful Students**



# Common Core Successes



Getting to the Core



## CLAS Teachers Building Relationships with Staff

Superior Standards

Supportive School Climate

Successful Students

# Common Core Successes



Getting to the Core



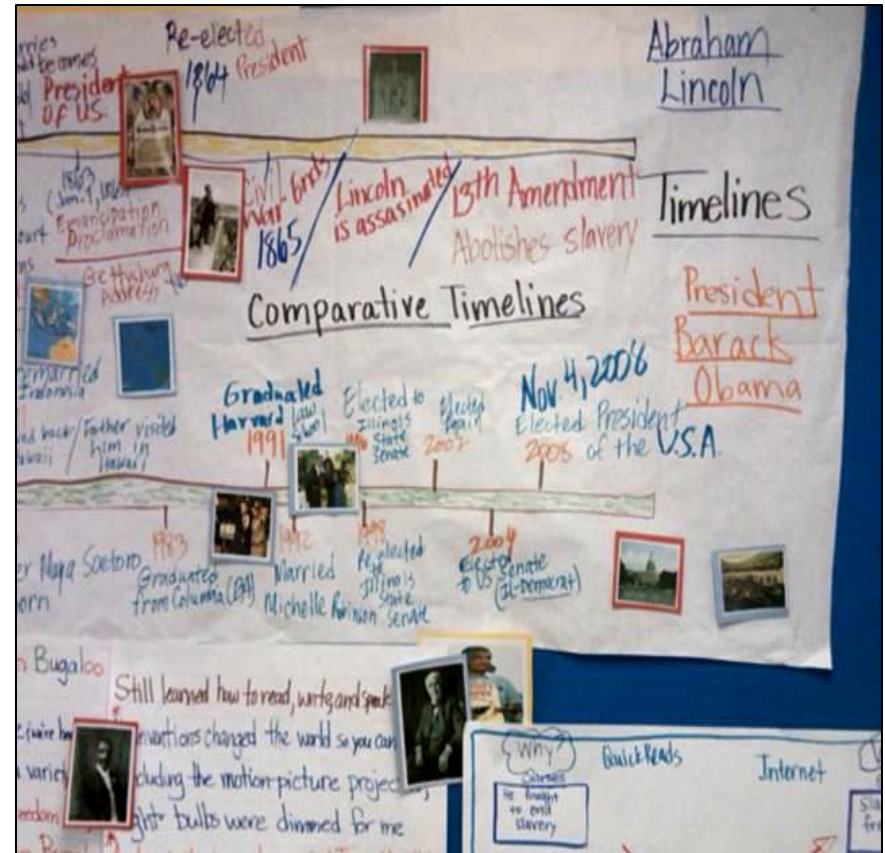
**Integration of Blended Learning Approach in TK**

**Superior Standards**

**Supportive School Climate**

**Successful Students**

# Common Core Successes



Getting to the Core



**Use of Best Practices from First Day of Instruction**

**Superior Standards**

**Supportive School Climate**

**Successful Students**

# PBIS Successes



## **The Davis Dolphin Way**

**From the classrooms to the playground**

**It's the Davis Dolphin Way.**

**We will strive to behave our very best**

**when we learn, and work, and play.**

**We will be respectful everyday.**

**We will be responsible too.**

**We will be the best problem solvers.**

**We'll be safe in all we do.**

**From the classrooms to the playground**

**The Davis Dolphin Way is cool!**



To the tune of the Marine Core Hymn

Getting to the Core



**Superior Standards**

**Supportive School Climate**

**Successful Students**

# PBIS Successes



## CRUSADER BEHAVIORAL STATEMENT

*We at Kennedy Say...*

**"I am RESPONSIBLE,  
RESPECTFUL, SAFE, and  
I MAKE GOOD CHOICES."**



Getting to the Core



Superior Standards

Supportive School Climate

Successful Students



# PBIS Successes



*Taft Tigers are Respectful, Responsible, and Safe!*

## TAFT PBIS EXPECTATIONS MATRIX

	Office	Library	Computer Lab	Assemblies	Bus
Respectful	<ul style="list-style-type: none"> <li>✦ Talk quietly</li> <li>✦ Say "please", "thank you", and/or "excuse me"</li> <li>✦ Wait patiently for your turn</li> </ul>	<ul style="list-style-type: none"> <li>✦ Talk quietly</li> <li>✦ Use polite and kind words</li> <li>✦ Say "excuse me" if you need assistance</li> <li>✦ Wait patiently for your turn</li> </ul>	<ul style="list-style-type: none"> <li>✦ Wait to be called on</li> <li>✦ Use polite and kind words</li> <li>✦ Follow directions the first time</li> </ul>	<ul style="list-style-type: none"> <li>✦ Be an active listener</li> <li>✦ Applaud appropriately to show appreciation</li> </ul>	<ul style="list-style-type: none"> <li>✦ Use polite and kind words</li> <li>✦ Share seats</li> </ul>
Responsible	<ul style="list-style-type: none"> <li>✦ Watch, listen, and follow directions</li> <li>✦ Know what you need</li> <li>✦ Bring a note</li> </ul>	<ul style="list-style-type: none"> <li>✦ Watch, listen, and follow directions</li> <li>✦ Follow library routines</li> <li>✦ Care for the books you check out</li> <li>✦ Bring back checked out books</li> </ul>	<ul style="list-style-type: none"> <li>✦ Log on to correct website</li> <li>✦ Remember your login number</li> <li>✦ Stay on task</li> <li>✦ Ask for help</li> </ul>	<ul style="list-style-type: none"> <li>✦ Watch, listen, and follow directions</li> <li>✦ Face forward and sit properly</li> </ul>	<ul style="list-style-type: none"> <li>✦ Watch, listen, and follow bus driver's directions</li> <li>✦ Follow bus area procedures</li> </ul>
Safe	<ul style="list-style-type: none"> <li>✦ Keep hands, feet, &amp; objects to self</li> <li>✦ Walk</li> <li>✦ Clean up after yourself</li> </ul>	<ul style="list-style-type: none"> <li>✦ Keep hands, feet, &amp; objects to self</li> <li>✦ Walk</li> <li>✦ Clean up after yourself</li> </ul>	<ul style="list-style-type: none"> <li>✦ Keep hands, feet, &amp; objects to self</li> <li>✦ Use materials appropriately</li> <li>✦ Clean up your area</li> <li>✦ Push in your chair</li> </ul>	<ul style="list-style-type: none"> <li>✦ Keep hands, feet, &amp; objects to self</li> <li>✦ Walk in all areas</li> </ul>	<ul style="list-style-type: none"> <li>✦ Keep hands, feet, &amp; objects to self</li> <li>✦ Enter and exit in an orderly fashion</li> <li>✦ Stay in your seat</li> <li>✦ Keep your body and belongings inside the bus</li> </ul>

Getting to the Core



Superior Standards

Supportive School Climate

Successful Students

# The Seven Building Blocks to SAUSD Success

## *Preparing All Students to be College and Career Ready*

### **Clear Focus on Learning**

Establish a specific vision of what high-quality, personalized learning and instruction looks like inside classrooms based on Common Core State Standards.

### **Comprehensive Accountability**

Assess student learning to inform practice and monitor implementation of best practices.

### **Climate**

Ensure safety of students and staff, and build trusting relationships that are driven by the core values of respect, responsibility, and results.

### **Capital**

Effectively and efficiently align fiscal, physical and personnel resources to support and ensure student learning.



Santa Ana Unified School District  
Office of the Superintendent

### **Communication**

Develop, define and deepen understanding of the District's vision internally and with our community through the creation of a unified message, including avenues for two way communication.

### **Community and Parent Involvement**

Establish transparent, credible processes for community and stakeholder involvement. Seek and promote partnerships with parent groups, community groups and community leaders.

### **Commitment and Capacity**

Ensure that all employees feel valued and enact the instructional vision through professional training, implementation, support, and monitoring of performance to strengthen student achievement.

# Clear Focus on Learning



**Clear Focus on Learning**  
Establish a specific vision of what high-quality, personalized learning and instruction looks like inside classrooms based on Common Core State Standards.

**Comprehensive Accountability**  
Assess student learning to inform practice and monitor implementation of best practices.

**Climate**  
Ensure safety of students and staff, build trusting relationships; driven by the core values of respect, responsibility, and results.

**Capital**  
Effectively and efficiently align fiscal, physical and personnel resources to support and ensure student learning.



**Communication**  
Develop, define and deepen understanding of the District's vision internally and with our community through the creation of a unified message, including avenues for two way communication.

**Community and Parent Involvement**  
Establish transparent, credible processes for community and stakeholder involvement. Seek and promote partnerships with parent groups, community groups and community leaders.

**Commitment and Capacity**  
Ensure that all employees feel valued and enact the instructional vision through professional training, implementation, support, and monitoring of performance to strengthen student achievement.

Getting to the Core



Superior Standards

Supportive School Climate

Successful Students

# Clear Focus on Learning



- Provide teachers with access to Common Core unit plans of study, inquiry-based and/or project-based learning, and performance-based assessments, to offer students authentic, frequent opportunities to read, write and think critically.

Getting to the Core



**Superior Standards**

**Supportive School Climate**

**Successful Students**

# Clear Focus on Learning



- Support teachers and staff through effective Multi-Tiered Systems of Support (MTSS) to proactively intervene and **enhance students'** opportunities for success.

Getting to the Core



Superior Standards

Supportive School Climate

Successful Students

# Clear Focus on Learning



- Ensure students receive a well-established instruction and support plan with milestones, timelines and assessments that ensure attainment of the Key Performance Indicators.

Getting to the Core



**Superior Standards**

**Supportive School Climate**

**Successful Students**

# Clear Focus on Learning



- Develop a proposal for a 2013-2014 and 2014-2015 Academic Calendar.

Getting to the Core



**Superior Standards**

**Supportive School Climate**

**Successful Students**

# Clear Focus on Learning



- Support multiple academic pathways through
  - QZAB
  - Century High School Master Planning
  - E-Rate
  - Irvine/Newport Development Area (INDA) School Planning
  - Additional K-8 schools

Getting to the Core



**Superior Standards**

**Supportive School Climate**

**Successful Students**



# Comprehensive Accountability



## Clear Focus on Learning

Establish a specific vision of what high-quality, personalized learning and instruction looks like inside classrooms based on Common Core State Standards.

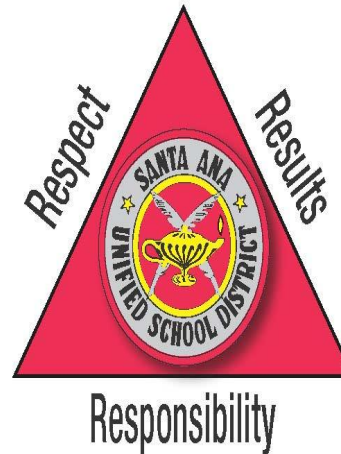
**Comprehensive Accountability**  
Assess student learning to inform practice and monitor implementation of best practices.

## Climate

Ensure safety of students and staff, build trusting relationships; driven by the core values of respect, responsibility, and results.

## Capital

Effectively and efficiently align fiscal, physical and personnel resources to support and ensure student learning.



## Communication

Develop, define and deepen understanding of the District's vision internally and with our community through the creation of a unified message, including avenues for two way communication.

## Community and Parent Involvement

Establish transparent, credible processes for community and stakeholder involvement. Seek and promote partnerships with parent groups, community groups and community leaders.

## Commitment and Capacity

Ensure that all employees feel valued and enact the instructional vision through professional training, implementation, support, and monitoring of performance to strengthen student achievement.

Getting to the Core



Superior Standards

Supportive School Climate

Successful Students

# Comprehensive Accountability



- Use of data to drive lesson planning and instruction through the Cycle of Inquiry.

Getting to the Core



**Superior Standards**

**Supportive School Climate**

**Successful Students**

# Comprehensive Accountability



- Access to Common Core unit plans of study that include hands-on, inquiry-based and/or project-based learning and performance-based assessments to provide students with authentic, frequent opportunities to read, write, and think critically.

Getting to the Core



**Superior Standards**

**Supportive School Climate**

**Successful Students**

# Comprehensive Accountability



- Actively participate in the Key Performance Indicator project of the Council of Great City Schools.

Getting to the Core



**Superior Standards**

**Supportive School Climate**

**Successful Students**

# Climate

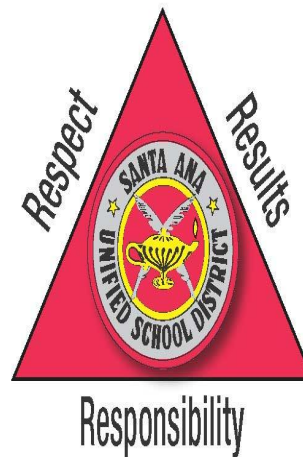


**Clear Focus on Learning**  
Establish a specific vision of what high-quality, personalized learning and instruction looks like inside classrooms based on Common Core State Standards.

**Comprehensive Accountability**  
Assess student learning to inform practice and monitor implementation of best practices.

**Climate**  
Ensure safety of students and staff, build trusting relationships; driven by the core values of respect, responsibility, and results

**Capital**  
Effectively and efficiently align fiscal, physical and personnel resources to support and ensure student learning.



**Communication**  
Develop, define and deepen understanding of the District's vision internally and with our community through the creation of a unified message, including avenues for two way communication.

**Community and Parent Involvement**  
Establish transparent, credible processes for community and stakeholder involvement. Seek and promote partnerships with parent groups, community groups and community leaders.

**Commitment and Capacity**  
Ensure that all employees feel valued and enact the instructional vision through professional training, implementation, support, and monitoring of performance to strengthen student achievement.

Getting to the Core



Superior Standards

Supportive School Climate

Successful Students

# Climate



- Implement a District-wide School Climate plan.

Getting to the Core



**Superior Standards**

**Supportive School Climate**

**Successful Students**

# Climate



- Implement a “We’re Listening” phone line and web page link to receive customer service feedback.

Getting to the Core



**Superior Standards**

**Supportive School Climate**

**Successful Students**

# Climate



- Provide clean, safe, and functional facilities.

Getting to the Core



**Superior Standards**

**Supportive School Climate**

**Successful Students**



# Capital



**Clear Focus on Learning**  
Establish a specific vision of what high-quality, personalized learning and instruction looks like inside classrooms based on Common Core State Standards.

**Comprehensive Accountability**  
Assess student learning to inform practice and monitor implementation of best practices.

**Climate**  
Ensure safety of students and staff, build trusting relationships; driven by the core values of respect, responsibility, and results.

**Capital**  
Effectively and efficiently align fiscal, physical and personnel resources to support and ensure student learning.

**Communication**  
Develop, define and deepen understanding of the District's vision internally and with our community through the creation of a unified message, including avenues for two way communication.

**Community and Parent Involvement**  
Establish transparent, credible processes for community and stakeholder involvement. Seek and promote partnerships with parent groups, community groups and community leaders.

**Commitment and Capacity**  
Ensure that all employees feel valued and enact the instructional vision through professional training, implementation, support, and monitoring of performance to strengthen student achievement.



Getting to the Core



Superior Standards

Supportive School Climate

Successful Students



# Capital

- Lead the development of an overhaul of the budget development process for 2013-14 to better identify and allocate necessary resources to aid in the accomplishment of the Seven Cs.

Getting to the Core



**Superior Standards**

**Supportive School Climate**

**Successful Students**

# Capital



- Lead the development of our District anticipatory response to possible mid-year cuts to lessen the negative impact on student achievement and human capital.

Getting to the Core



**Superior Standards**

**Supportive School Climate**

**Successful Students**

# Capital



- Create a plan to reduce high absence rates.

Getting to the Core



**Superior Standards**

**Supportive School Climate**

**Successful Students**



# Capital

- Design classified and certificated negotiation strategies.

Getting to the Core



**Superior Standards**

**Supportive School Climate**

**Successful Students**

# Communication



**Clear Focus on Learning**  
Establish a specific vision of what high-quality, personalized learning and instruction looks like inside classrooms based on Common Core State Standards.

**Comprehensive Accountability**  
Assess student learning to inform practice and monitor implementation of best practices.

**Climate**  
Ensure safety of students and staff, build trusting relationships; driven by the core values of respect, responsibility, and results.

**Capital**  
Effectively and efficiently align fiscal, physical and personnel resources to support and ensure student learning.



**Communication**  
Develop, define and deepen understanding of the District's vision internally and with our community through the creation of a unified message, including avenues for two way communication.

**Community and Parent Involvement**  
Establish transparent, credible processes for community and stakeholder involvement. Seek and promote partnerships with parent groups, community groups and community leaders.

**Commitment and Capacity**  
Ensure that all employees feel valued and enact the instructional vision through professional training, implementation, support, and monitoring of performance to strengthen student achievement.

Getting to the Core



Superior Standards

Supportive School Climate

Successful Students

# Communication



- Participate in and coordinate the development of a comprehensive approach to District-wide internal and external communications.

Getting to the Core



**Superior Standards**

**Supportive School Climate**

**Successful Students**

# Communication



- Enhance Board and financial indications by including more relevant information for internal and external readers.

Getting to the Core



**Superior Standards**

**Supportive School Climate**

**Successful Students**



# Communication



- Create a comprehensive strategic internal communication plan that encompasses timely, relevant, accessible and resourceful content for all SAUSD employees.

Getting to the Core



**Superior Standards**

**Supportive School Climate**

**Successful Students**

# Communication



- Create a comprehensive strategic external communication plan that encompasses a multitude of modalities to educate, inform and connect with District external stakeholders and provide avenues that support two-way communication.

Getting to the Core



**Superior Standards**

**Supportive School Climate**

**Successful Students**

# Communication



- Develop strong relationships with media stakeholders to create an avenue to maximize the reach of our audience to promote District vision and unified messaging.

Getting to the Core



**Superior Standards**

**Supportive School Climate**

**Successful Students**

# Community and Parent Involvement



**Clear Focus on Learning**  
Establish a specific vision of what high-quality, personalized learning and instruction looks like inside classrooms based on Common Core State Standards.

**Comprehensive Accountability**  
Assess student learning to inform practice and monitor implementation of best practices.

**Climate**  
Ensure safety of students and staff, build trusting relationships; driven by the core values of respect, responsibility, and results.

**Capital**  
Effectively and efficiently align fiscal, physical and personnel resources to support and ensure student learning.



**Communication**  
Develop, define and deepen understanding of the District's vision internally and with our community through the creation of a unified message, including avenues for two way communication.

**Community and Parent Involvement**  
Establish transparent, credible processes for community and stakeholder involvement. Seek and promote partnerships with parent groups, community groups and community leaders

**Commitment and Capacity**  
Ensure that all employees feel valued and enact the instructional vision through professional training, implementation, support, and monitoring of performance to strengthen student achievement.

Getting to the Core



Superior Standards

Supportive School Climate

Successful Students

# Community and Parent Involvement



- Develop, implement, monitor and evaluate SAUSD Community and Parent Involvement and Outreach Action Plan.

Getting to the Core



**Superior Standards**

**Supportive School Climate**

**Successful Students**

# Community and Parent Involvement



- Apply for a plan development and writing grant with the California Endowment.

Getting to the Core



**Superior Standards**

**Supportive School Climate**

**Successful Students**

# Community and Parent Involvement



- Facilitate, support, and expand site-based parental engagement programs like that at Santa Ana High School “Padres Saints”.

Getting to the Core



Superior Standards

Supportive School Climate

Successful Students

# Community and Parent Involvement



- Seek and recruit at least five new business partnerships to build a wider community network for the District.

Getting to the Core



**Superior Standards**

**Supportive School Climate**

**Successful Students**



# Commitment and Capacity

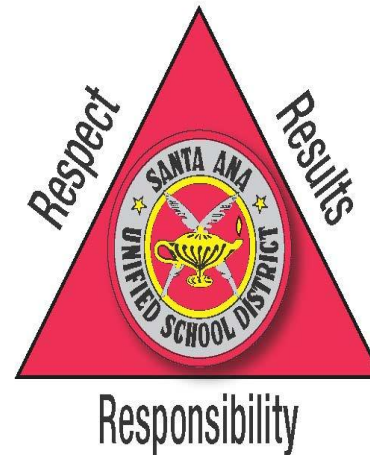


**Clear Focus on Learning**  
Establish a specific vision of what high-quality, personalized learning and instruction looks like inside classrooms based on Common Core State Standards.

**Comprehensive Accountability**  
Assess student learning to inform practice and monitor implementation of best practices.

**Climate**  
Ensure safety of students and staff, build trusting relationships; driven by the core values of respect, responsibility, and results.

**Capital**  
Effectively and efficiently align fiscal, physical and personnel resources to support and ensure student learning.



**Communication**  
Develop, define and deepen understanding of the District's vision internally and with our community through the creation of a unified message, including avenues for two way communication.

**Community and Parent Involvement**  
Establish transparent, credible processes for community and stakeholder involvement. Seek and promote partnerships with parent groups, community groups and community leaders.

**Commitment and Capacity**  
Ensure that all employees feel valued and enact the instructional vision through professional training, implementation, support, and monitoring of performance to strengthen student achievement.

Getting to the Core



Superior Standards

Supportive School Climate

Successful Students

# Commitment and Capacity



- Provide training, coaching and support to certificated employees so they feel valued **and engaged in the District's** instructional vision for students to achieve.

Getting to the Core



Superior Standards

Supportive School Climate

Successful Students

# Commitment and Capacity



- Enhance new employee orientation program.

Getting to the Core



**Superior Standards**

**Supportive School Climate**

**Successful Students**

# Commitment and Capacity



- Provide certification pathways for classified employees.

Getting to the Core



**Superior Standards**

**Supportive School Climate**

**Successful Students**

# Commitment and Capacity



- Develop administrators through **PIVOT** or Superintendent's Academy programs.

Getting to the Core



Superior Standards

Supportive School Climate

Successful Students

# Commitment and Capacity



- Provide human resources training in monthly principal meetings.

Getting to the Core



**Superior Standards**

**Supportive School Climate**

**Successful Students**

# Commitment and Capacity



- Evaluate the effectiveness of the investment of resources used to fund the SAUSD participation in USC School of Business Management program.

Getting to the Core



**Superior Standards**

**Supportive School Climate**

**Successful Students**

# Common Core and School Climate



How do we know these methods are effective?

Getting to the Core



**Superior Standards**

**Supportive School Climate**

**Successful Students**



# Launch to the Future!

*Step 9*

A-G course completion in grade 12

*Step 8*

PSAT/SAT /ACT in grade 10-12

*Step 7*

AP courses in grade 10-12

*Step 6*

Algebra 2 proficiency by grade 11

*Step 5*

Algebra 1 proficiency in grade 8 or 9

*Step 4*

Math proficiency in grade 4

*Step 3*

EL proficiency and reclassification, grade 5, 7 & 10

*Step 2*

Writing proficiency in grade 4, 7 & 10

*Step 1*

Reading proficiency in grade 1, 3 & 6

**Nine Steps  
to Success  
for  
College  
and  
Career**

**Getting to the Core**



**Superior Standards**

**Supportive School Climate**

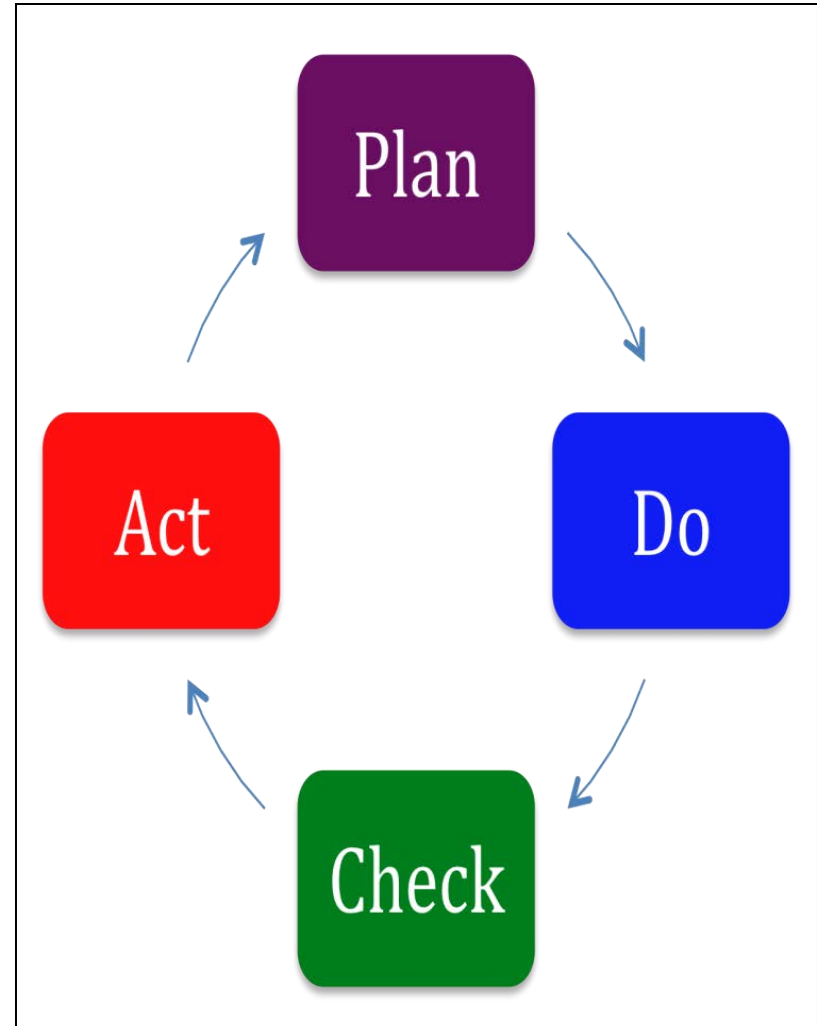
**Successful Students**

10/04/12

# Cycle of Inquiry



- Develop a clear definition of the problem of practice
- Generate possible solutions and strategies
- Clarify the rationale for the chosen strategies
- Envision and decide on short term and long term goals
- Sort evidence of progress
- Address the problem in light of new data



Getting to the Core

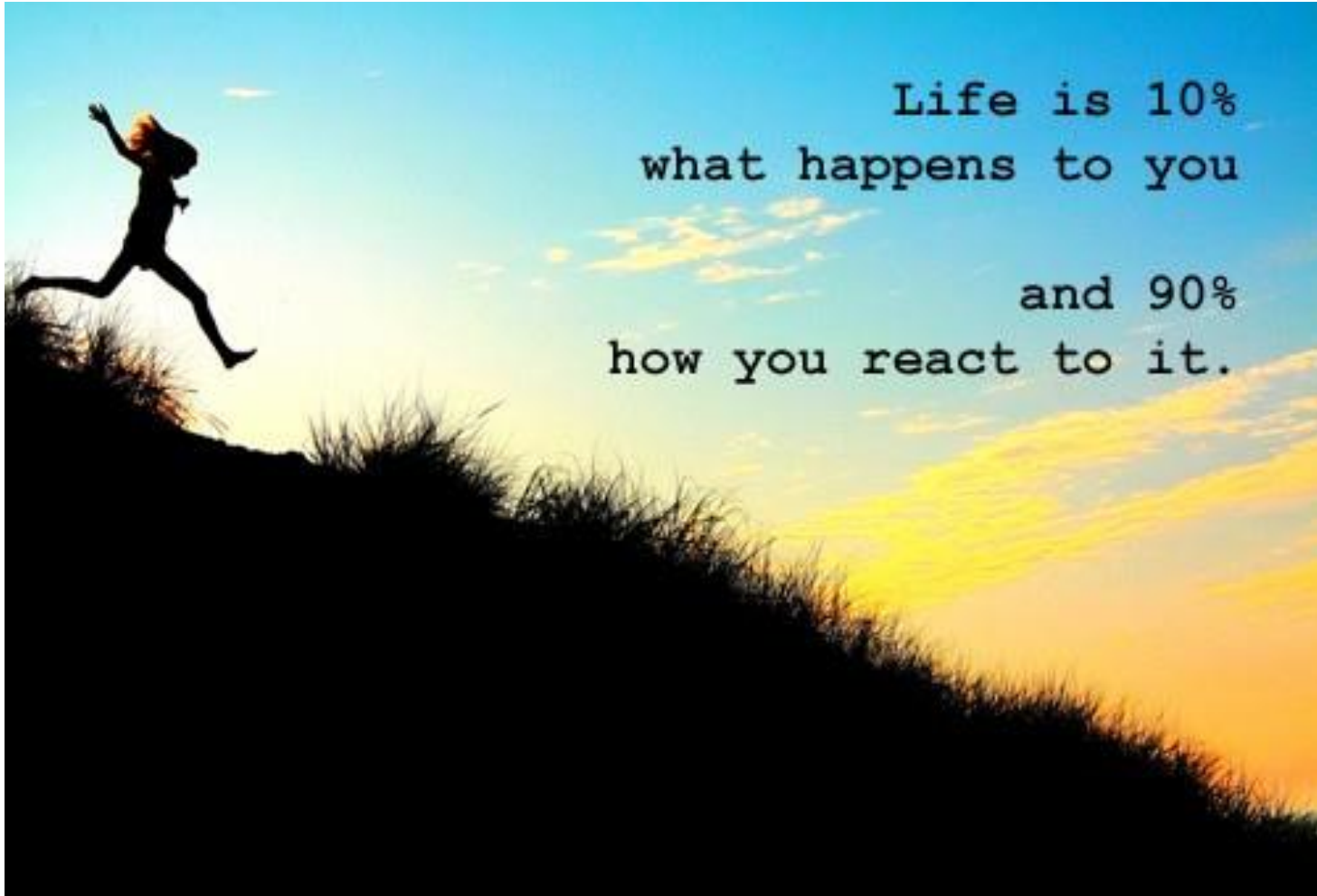


**Superior Standards**

**Supportive School Climate**

**Successful Students**

# Rafael



Getting to the Core



Superior Standards

Supportive School Climate

Successful Students